

# SOUTH EAST OPEN STUDIOS



**Janet Aldis / 276**

3/4/5/10/11/12/  
17/18/19th June  
Crows Camp Studio,  
Bishopsbourne, Kent, CT4 5JH  
01227 830878/07764 279103  
[www.crowscamp.co.uk](http://www.crowscamp.co.uk)



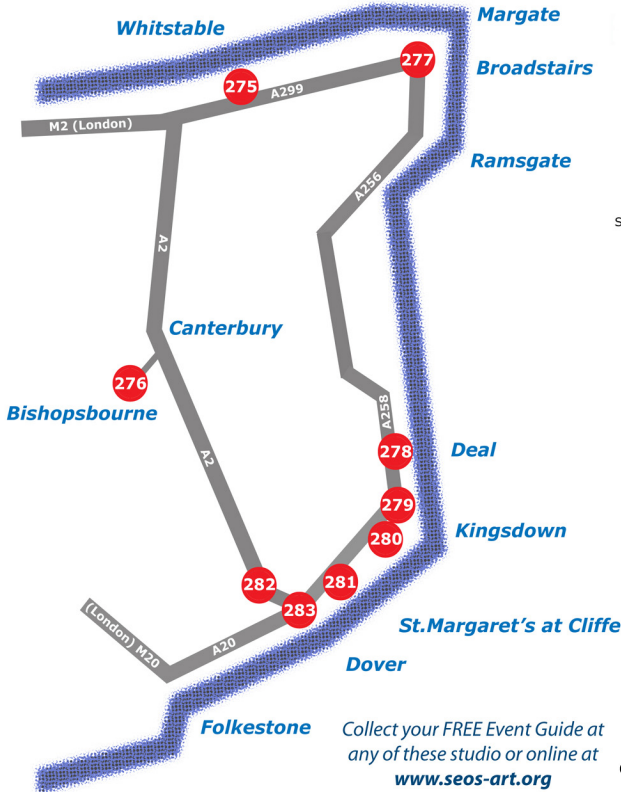
**Carol Allison / 282**

3/4/5/10/11/12/14/15  
Malvern Studio,  
3 Malvern Meadow,  
Kearsney, Dover, CT16 3AH  
01304 822797



**Mike Tedder / 283**

4/5/11/12/18/19th June  
30 Odo Road, Dover, CT17 0DP  
01304 241535/07905 396752  
[www.miketedder.com](http://www.miketedder.com)



Collect your **FREE** Event Guide at  
any of these studio or online at  
[www.seos-art.org](http://www.seos-art.org)



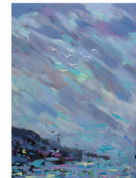
**Wendy Fraser / 281**

3/4/5/10/11/12/  
17/18/19th June  
White Walnut Cottage,  
57 Kingsdown Road,  
St. Margaret's at Cliffe, CT15 6AZ  
01304 853805  
[www.wendyfraser.com](http://www.wendyfraser.com)



**John Blezard / 280**

4/5/12/19th June  
18 North Road,  
Kingsdown, CT14 8AG  
01304 373579  
[www.johnblezard.co.uk](http://www.johnblezard.co.uk)



**Nikki Wheeler / 279**

11/18th June  
Yattendon, St. James Road,  
Kingsdown, CT14 8BQ  
01304 362375/07940 351966  
[www.nikkiewheeler.com](http://www.nikkiewheeler.com)



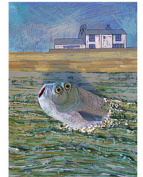
**Richard**

**Taylor-Jones / 278**  
3/4/5/11/12/18/19th  
47 The Marina, Deal, CT14 6NP  
[richard@esklmmedia.co.uk](http://richard@esklmmedia.co.uk)  
[web.me.com/richardtaylorjones](http://web.me.com/richardtaylorjones)



**Vinka**

**Dekovic-Knight / 277**  
4/5/11/12/18/19th June  
35 Gladstone Road,  
Broadstairs, CT10 2HY  
01843 601265/07807 526783  
[www.vinkasculpture.co.uk](http://www.vinkasculpture.co.uk)



**Paul George / 275**

3/5/6/10/11/15/17th June  
Whits End, 39 Collingwood Road  
Whitstable, CT5 1ED  
01227 266729/07771 966542  
[www.paulgeorge.org.uk](http://www.paulgeorge.org.uk)

East Kent Coastal Art Trail - Discover art on your doorstep  
3rd - 19th June 2011

